

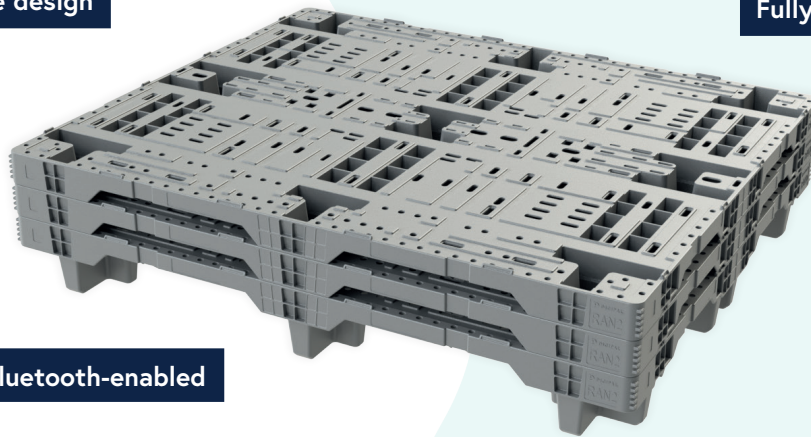
RAN2 – RACKABLE AND NESTABLE PALLET, OFFERING GREAT SUPPLY CHAIN SAVINGS

Product Specification

Digipal RAN2 – 1,200mm x 1000mm Rackable and Nestable Pallet

Nestable design

Fully recyclable



Bluetooth-enabled

Description

The Digipal RAN2 is the latest innovative design in plastic pallets with IoT capabilities.

The only pallet that can rack 1,250kg for high bay warehouse use – and be nested – saving 3x on transportation, handling and storage costs compared to standard plastic pallets.

RAN Plastic Pallets are cleanable, hygienic and do not create wood splinters.

A true circular economy, they are recycled at the end of their lifespan and offer a 2/3 CO₂ reduction on transportation.

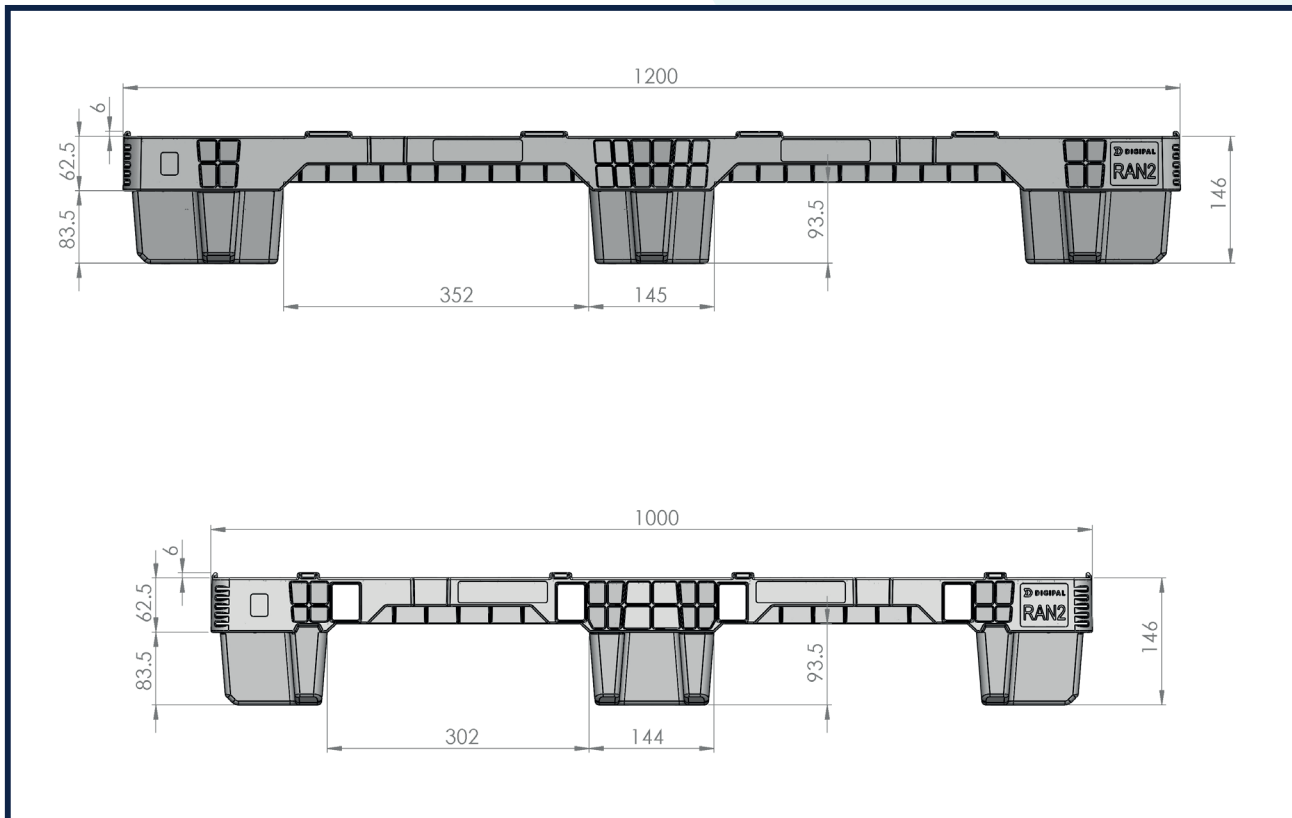
The RAN family of pallets are fitted with a passive Bluetooth tag, enabling assets to be tracked end-to-end and providing seamless connectivity during automation or racking.

This environmentally-friendly solution provides huge benefits for customers, allowing pallets to be accepted through an online portal without the need for them to be manually declared. Future-proof your supply chain and make big savings in the process.

Specifications		Dimensions	(L) 1,200 x (W) 1000 x (H) 146mm
Traceability	Bluetooth-enabled	Static Load	7,500kg
Pallet Weight	18.5kg	Dynamic Load	2,500kg
Material	PP	Racking Load	1,250kg

Dimensions - mm

± 2% tolerance



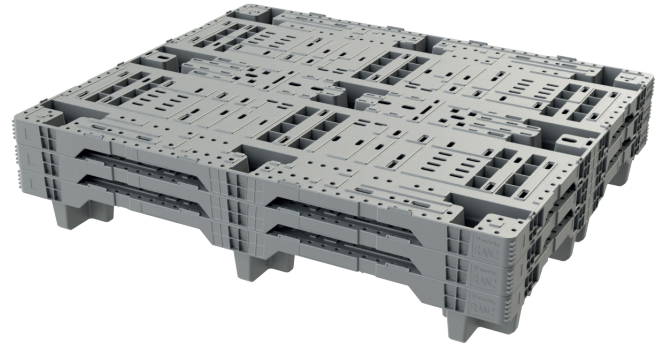
Improving your operation

Keep track of your assets with IoT-enabled plastic pallets.

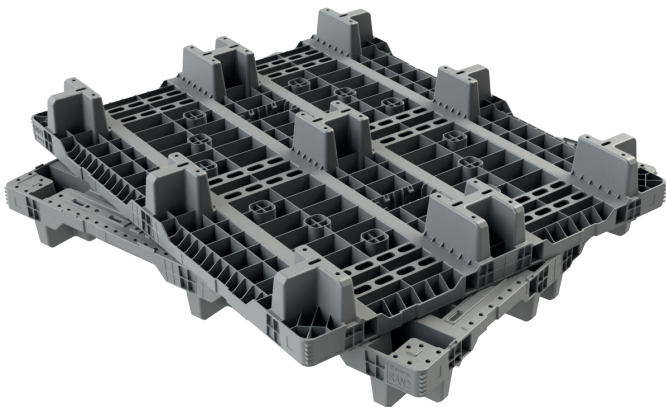
Providing improved efficiency, reducing your footprint – both physically and environmentally, and lowering your operational costs – it's a **no-brainer!**



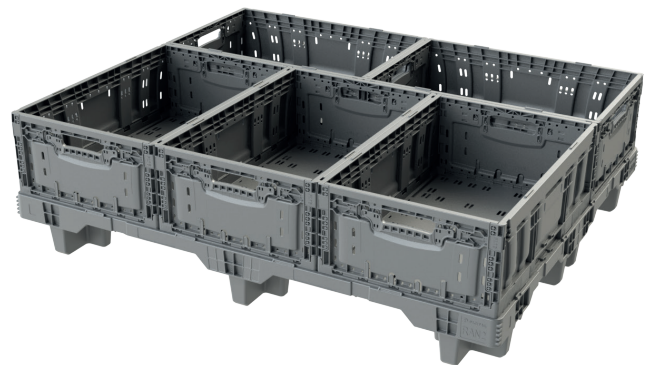
Space-saving, rackable design



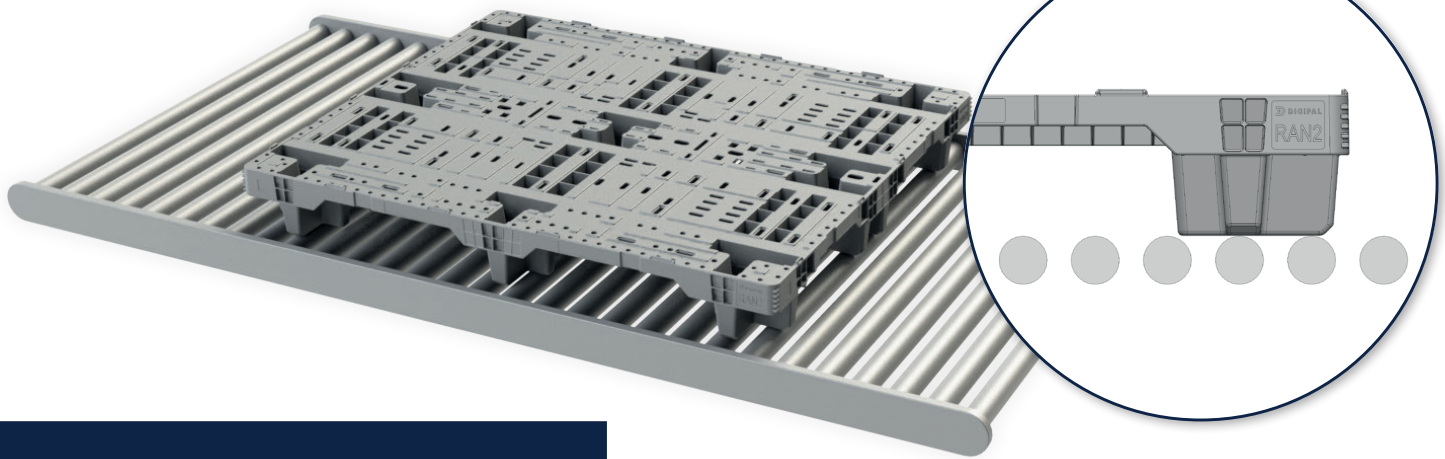
Uniform layout for easy nesting



Easy lifting with pallet or forklift truck

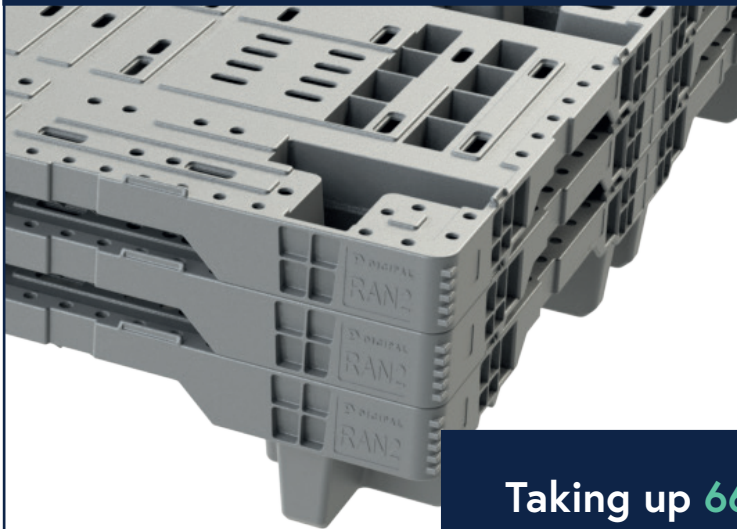


Crates lock in neatly – no overhang



Max. length of legs allowing for smooth travel on conveyors

RAN2 Plastic Pallets vs Traditional Wooden Pallets



Taking up **66%** less space!

Are you ready to:

- Reduce storage space?
- Reduce transport and handling costs?
- Reduce asset losses?
- Reduce your CO₂ emissions?

Get in touch
today